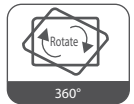
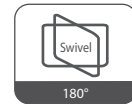
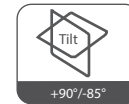
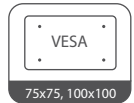
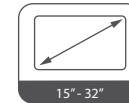
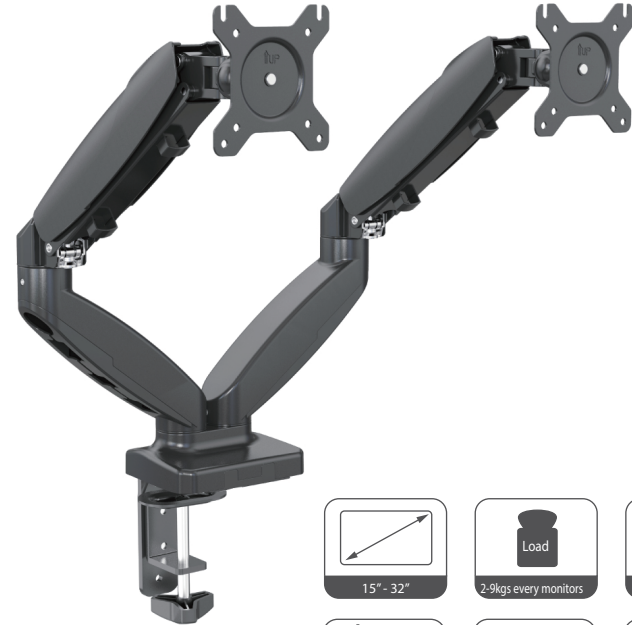




RMS-E42

Thank you for purchasing a Rosewill Monitor Desk Mount.
Please read the instruction manual before use and retain for future reference.

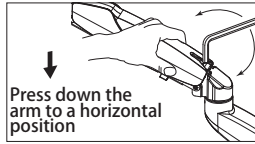


Installation **INSTRUCTIONS**

4



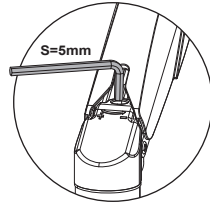
Be sure to keep the arm in horizontal position during adjustment. Or else, it would be difficult to adjust the mount.



Press down the arm to a horizontal position

S=5mm

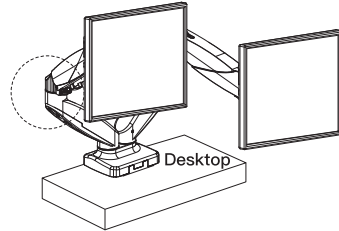
B



S=5mm



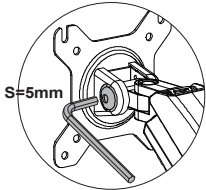
NOTE: Turn clockwise to reduce tension for lighter monitors and counter-clockwise to increase tension for heavier monitors.



Desktop

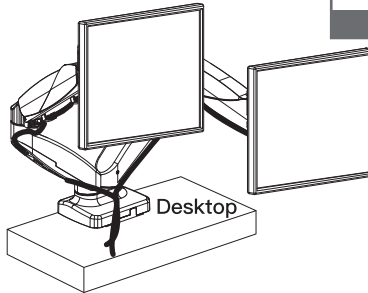
Use a hex wrench to adjust the height tension of the gas spring arm, to keep different weight of monitors still at any position.

5



S=5mm

Use a hex wrench to adjust the damp for tilting. Turn counter-clockwise to reduce damping and clockwise to increase damping.



Desktop

S=5mm

B

Insert cables into cable covers. Leave enough slack of cables at arm joints for full adjustment.



Technical Support Information techsupport@rosewill.com 1-800-575-9885
Please register your product at www.rosewill.com for complete warranty information and support for your product.



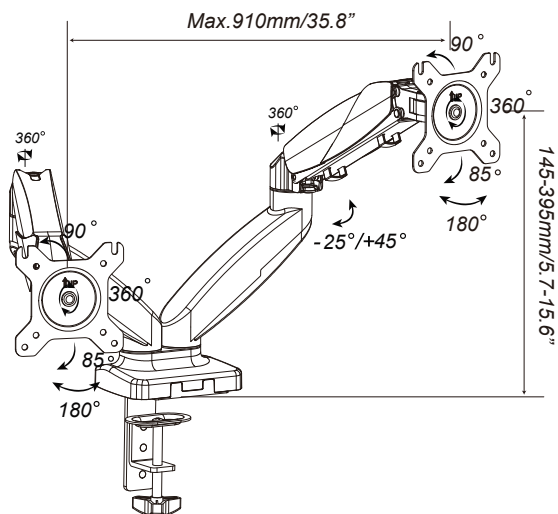
RMS-E42_A

WARNING STATEMENTS

Warning

- ⚠ Prior to the installation of this product, the installation instruction must be read and completely understood. Failure to do so may result in personal injury, property damage or voiding of factory warranty.
- ⚠ Do not install on a structure that is prone to vibration, movement or chance of impact. Reinforce the structure as required before installation.
- ⚠ The desk clamp can support a maximum thickness of 10 cm. Confirm the desk edge before installation.
- ⚠ Pay attention to the weight capacity of the mount. Exceeding the limitation can result in function unworkable or even serious personal injury and property damage.
- ⚠ Never operate the mount if parts are missing or damaged. Contact your local service center for warranty service.

PRODUCT LINE GRAPH



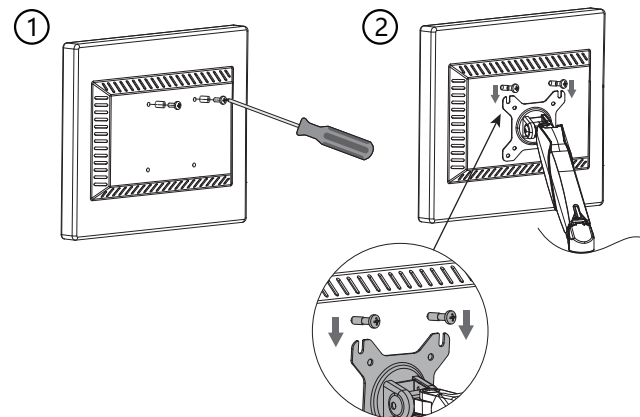
OR
3

Recessed surface installation: Put spacers between headplate and monitor. Install the upper two screws and don't screw them tight. Leave some space and hang the monitor on the head plate.

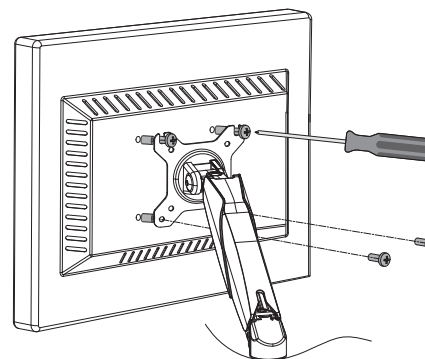
M4x30

12x5.8x16

A



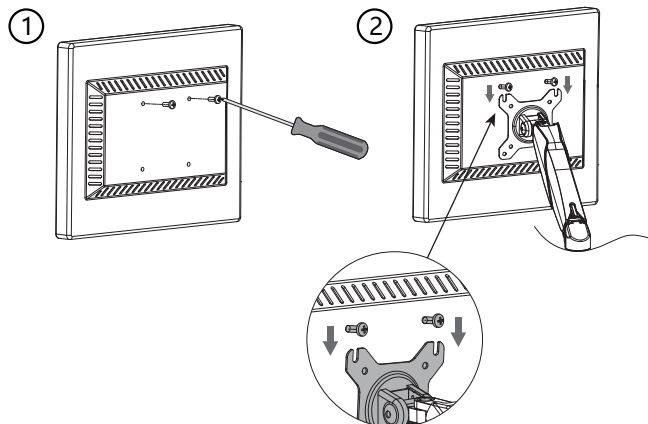
③ Recessed surface installation: Put spacers between headplate and monitor. Install the lower two screws and fasten the upper two screws.



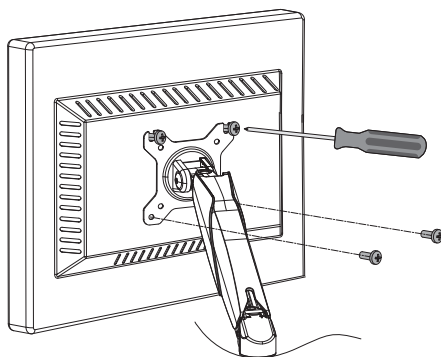
3

Flush surface installation: Install the upper two screws and don't screw them tight. Leave some space and hang the monitor on the head plate.

M4x12
A



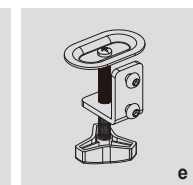
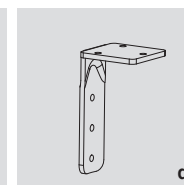
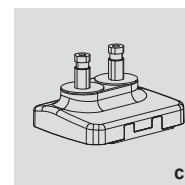
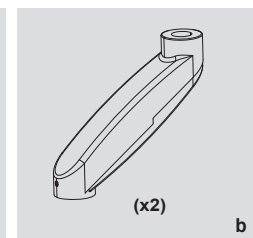
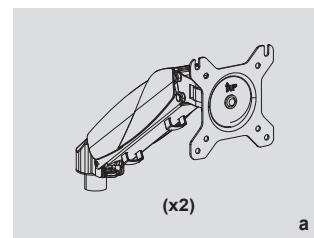
③ Flush surface installation: Install the lower two screws and fasten the upper two screws.










TOOLS REQUIRED NOT INCLUDED

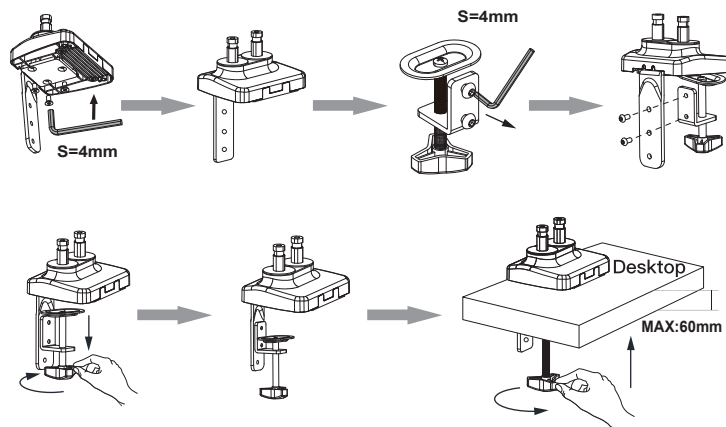
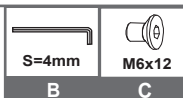


PARTS INCLUDED



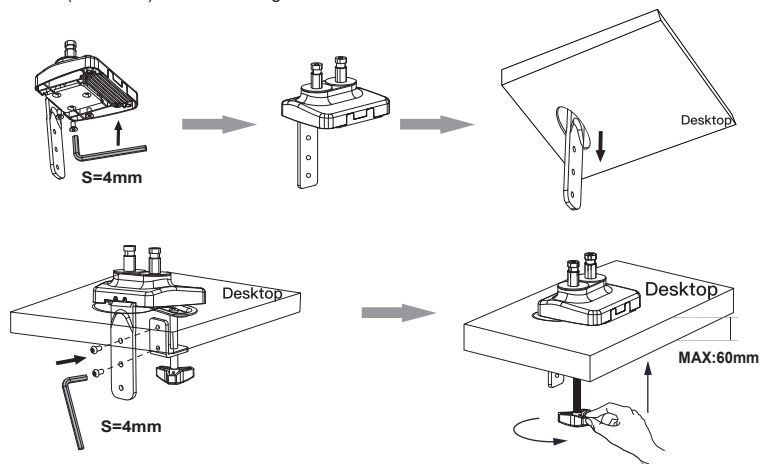
A	 M4x12 (x8)	 M4x30 (x8)	 12x5.8x16 (x8)
B	 S=3mm (x1)	 S=4mm (x1)	 S=5mm (x1)
C	 M6x12 (x3)		

1 Desk Clamp installation

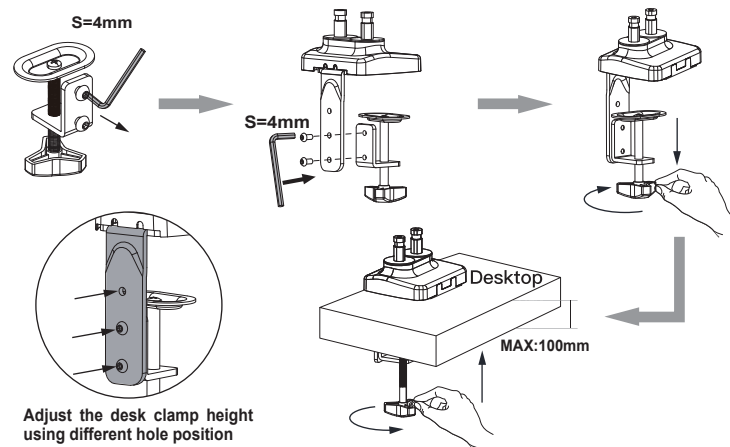


OR Grommet installation

NOTE: If your desk has an existing grommet hole, Please install directly. If there is no existing grommet hole, make a mark on your mounting surface, and use a drill to drill a hole (40-60mm) in the mounting surface.

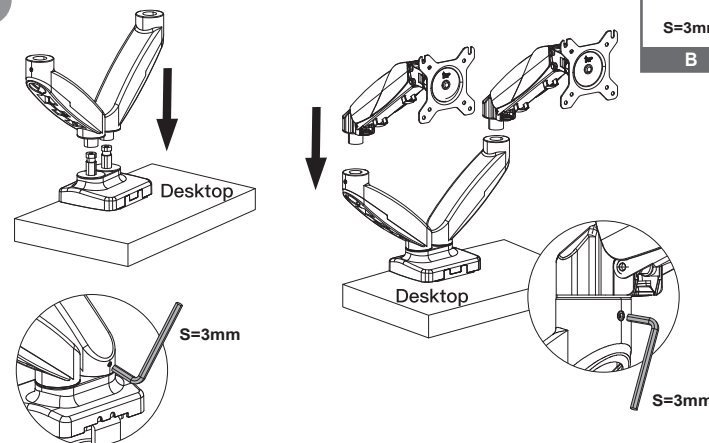


NOTE: Change the clamp default holes if desktop is between 60-100 mm.



Adjust the desk clamp height using different hole position

2



Install the lower arm to the base.
Insert the gas spring arm above the lower arm.